



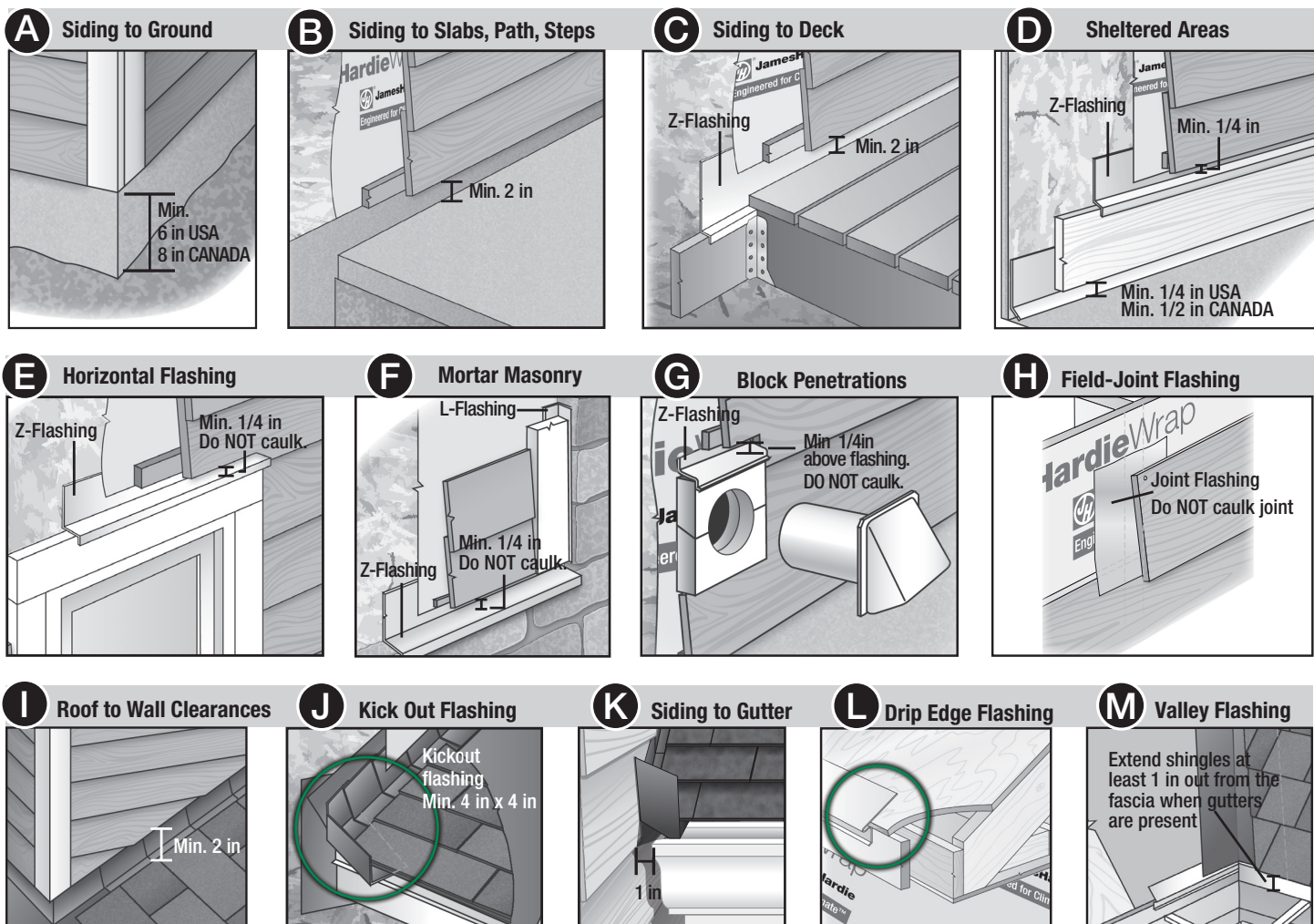
QUICK START INSTALLATION GUIDE

JamesHardiePros.com

IMPORTANT: This document is not intended to take the place of James Hardie published installation instructions. Failure to install and finish this product in accordance with

applicable building codes and James Hardie published instructions may lead to personal injury, affect system performance, violate local building codes, and void the product

only warranty. For the latest set of complete installation instructions applicable to your jobsite location, visit JamesHardiePros.com or call 1-866-942-7343 (866-9-HARDIE)



IMPORTANT FASTENING INFORMATION: James Hardie® siding, trim and soffit products must be installed in a manner that meets local building code and wind load requirements. It is the responsibility of the installer, builder, architect or other building professional and the home or property owner to ensure the fasteners and fastening schedules used result in an installation that is code compliant.

Consult ESR 1844 and ESR 2290 or other applicable, local code compliance documentation for guidance on fastener selection and placement to achieve design wind loads for the specific James Hardie siding product, framing type, building height, wind exposure category and other factors relevant to your project.

For special circumstances outside the scope of these documents, please refer to the Technical Document library at www.jameshardie.com or contact James Hardie's Technical Services at 1-888-J-HARDIE (1-888-542-7343).

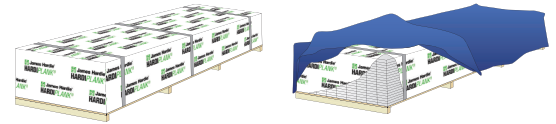


JamesHardiePros.com

Job Site Storage & Proper Handling

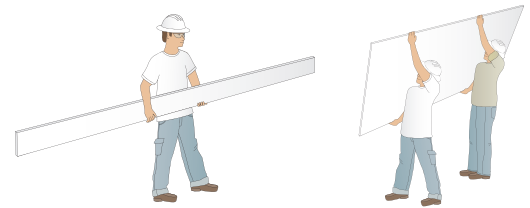
JOBSITE STORAGE

James Hardie siding and trim products must be kept dry at all times prior to installation. James Hardie products should be stored in their original packaging. They must be kept off the ground on a pallet. If stored outside, protect with an additional waterproof covering.



PROPER HANDLING

To help avoid injury and product damage, lap siding, trim, and soffit material should always be carried on edge. One person should hold planks on edge in the middle with arms spread apart to support the product. Panel products should always be carried by two people, on edge.



ColorPlus Technology Accessories

TOUCH-UP KITS

Edge Coater - edge coating is required for any field cuts to seal the edges and make joints less visible.

Touch-up Pens - conceal nailheads and very small nicks and scratches less than a dime size. Replace the area with a new piece of plank or panel if area is larger than a dime.



COLOR MATCHED CAULK

Use caulk that comply with ASTM C920 Grade NS, Class 25 or higher or a latex joint sealant complying with ASTM C834. Apply caulk in accordance with the manufacturer's written instructions. **DO NOT** caulk siding butt-joints or the clearance above the flashing.



LAMINATE

Leave protective laminate sheet in place during cutting, installation and touch-up, then remove laminate and discard.

Visit JamesHardiePros.com for the latest installation instructions and useful job-site tips in our industry-leading Best Practice Guide.